

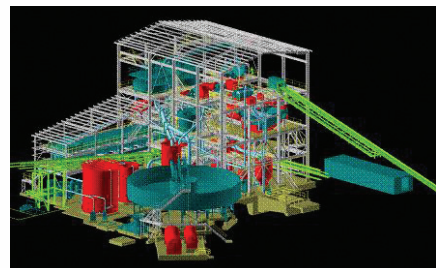
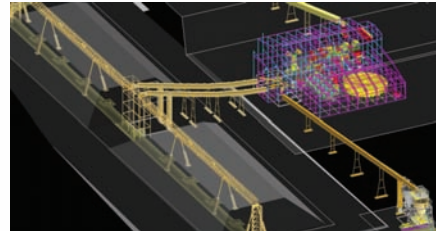


**QCC**  
RESOURCES

## CHPP Design

QCC Resources offers a complete CHPP design capability incorporating process selection, conceptual flow diagrams, 3D CAD models and layouts, and detail drawings of equipment, civil works, structure, plate work and piping systems.

In operation for over 25 years, our teams have designed a wide range of plants including state of the art facilities, refurbishment of existing plants and low cost modular plants.



## Recent Design Projects

Project	Description	Capacity	Completion
Ravensworth North	New and upgraded CHPP DMC/Spirals	3000 t/h	2013
Curragh	New CHPP DMC/Flotation	1200 t/h	2012
Mangoola	New CHPP two module plant DMC/Spirals	1800 t/h	2011
Stockton (NZ)	New CHPP DMC/three stage HBS	250 t/h	2011
Mt Arthur Coal	New Module Upgrade DMC/HBS/Spirals	2700 t/h	2006
Goedgevonden Colliery (RSA)	New CPP two module plant DMC/Spirals	2000 t/h	2009
Liddell	New CPP module DMC/Spirals	1000 t/h	2008
Mt Owen	New 650 t/h module and ROM system upgrade DMC/Spirals	650 t/h	2008
Camberwell Coal	Capacity and Flotation Upgrade	1200 t/h with TBS	2007
Mt Arthur Coal	CHPP Upgrade for MAC20	3000 t/h	2010